

# NOUVELLE STAR TOUR ETE 2010

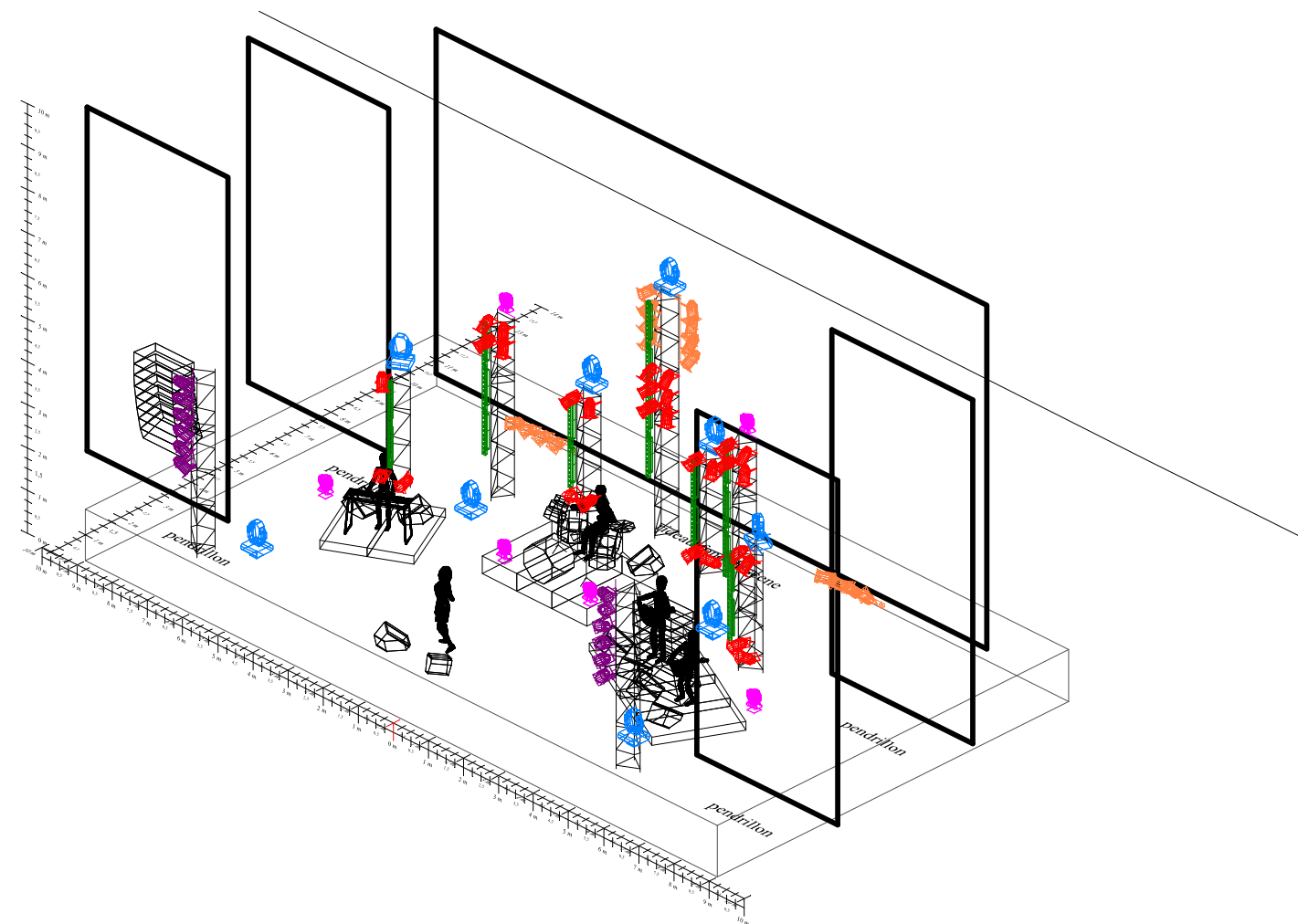
Contact:

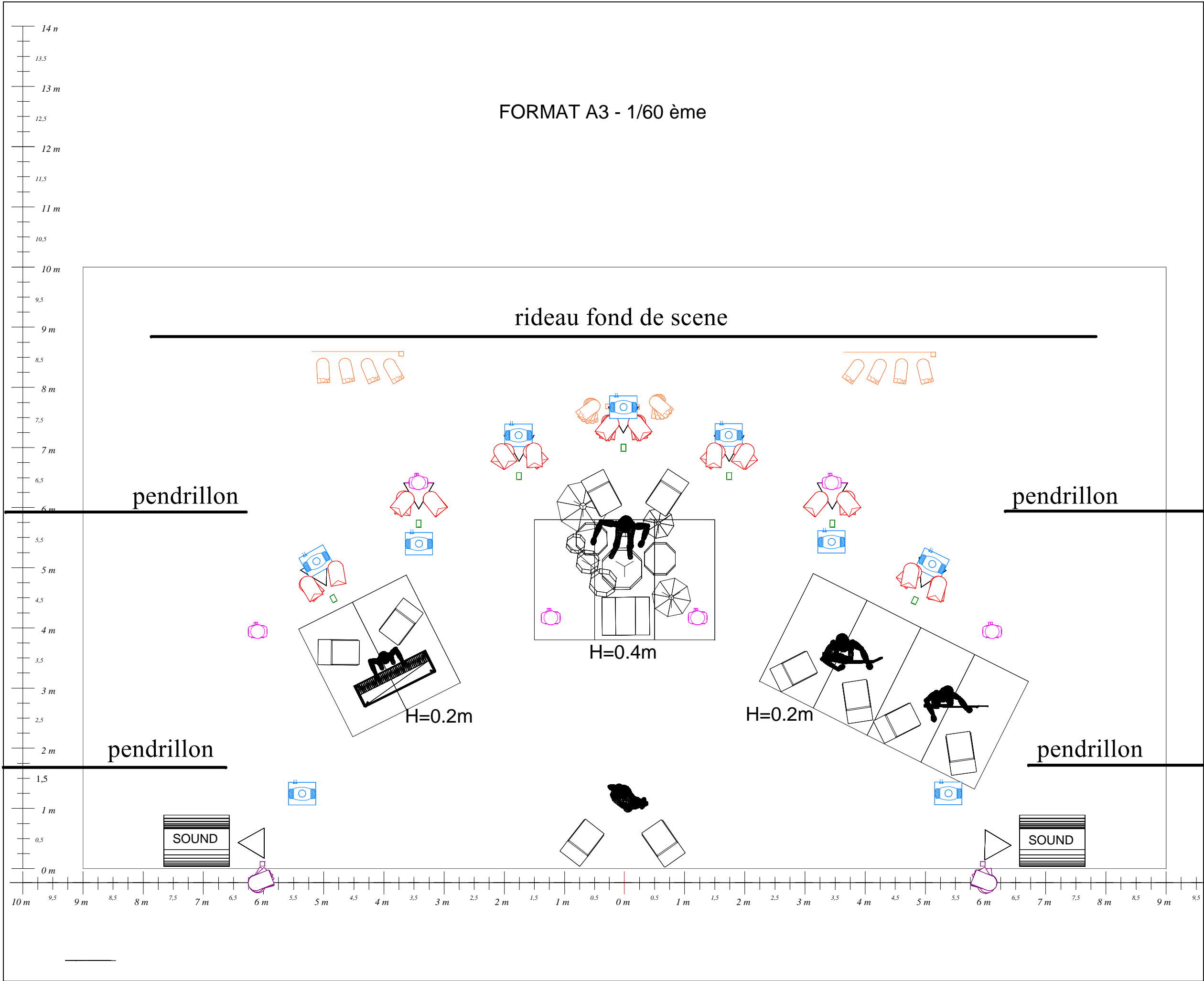
Production: FONTEX Bertrand

Lumière:	MANGIN Yves	- yves.mangin@mac.com	- 00 33 6 07 22 62 10
Son:	SIGNOLET Laurent	- ptilo@free.fr	- 00 33 6 88 18 29 37

## PLAN D'IMPLANTATION SCENE LUMIERE et STRUCTURE

### VERSION INSTALLATION SUR TOTEM V4R25





## LEGENDE



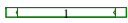
9 x MAC700 Spot 16bit



6 x MAC301 LEDWash



4 x Demi-ACL250



18 x sunstrip dmx 10ch



2 x BARRE 6xPAR64 CP62



29 x PAR64 CP62



9 x praticable (2m x 1m)

## NOTES

- Atmosphere machines MDG MAX 3000
- Console GRAND MA FULL SIZE
- Praticable avec juppe noire
- Scene Sol Noir
- 9 x Praticble 2x1m avec moquette noire

## STRUCTURE:

- 9 x Totem serie 500 tri
- detail:
- 4 x 2.80m (1 section PA280)
- 4 x 4.20m (1 section PA280 + 1 section PA140)
- 1 x 5.60m (2 sections PA280)



## NOUVELLE STAR 2010

Lighting Design:	MANGIN Yves
Producteur:	FONTEIX Bertrand
Production:	MEGASTARS INTER.
Scenic Design:	MANGIN Yves
Venue:	Plan vue de dessus
Zero Date:	TOURNEE 2010
Echelle:	Format A3 - 1/60eme
Version:	NST2010 V4 TOTEM
File:	NST2010 V4R25 TOTEM.wyg

FORMAT A3 - 1/60 ème

LEGENDE

- 9 x MAC700 Spot 16bit
- 6 x MAC301 LEDWash
- 4 x Demi-ACL250 (sol jaune)
- 18 x sunstrip dmx 10ch
- 2 x BARRE 6xPAR64 CP62
- 29 x PAR64 CP62

- NOTES**
- Atmosphere machines MDG MAX 3000
  - Console GRAND MA FULL SIZE
  - Praticable avec juppe noire
  - Scene Sol Noir
  - 9 x Praticble 2x1m avec moquette noire

- STRUCTURE:**
- 9 x Totem serie 500 tri detail:
  - 4 x 2.80m (1 section PA280)
  - 4 x 4.20m (1 section PA280 + 1 section PA140)
  - 1 x 5.60m (2 sections PA280)



NOUVELLE STAR 2010	
Lighting Design:	MANGIN Yves
Producteur:	FONTEIX Bertrand
Production:	MEGASTARS INTER.
Scenic Design:	MANGIN Yves
Venue:	Plan vue de Face
Zero Date:	TOURNEE 2010
Echelle:	Format A3 - 1/60eme
Version:	NST2010 V4 TOTEM
File:	NST2010 V4R25 TOTEM.wyg

